

# Introduction to The Rocky Shore

**Northeastern University Marine Science Center  
Nahant, MA**



**Northeastern University**  
*Marine Science Center*

What is it called when the water meets the land?



A Beach!



# In New England, we have different types of beaches



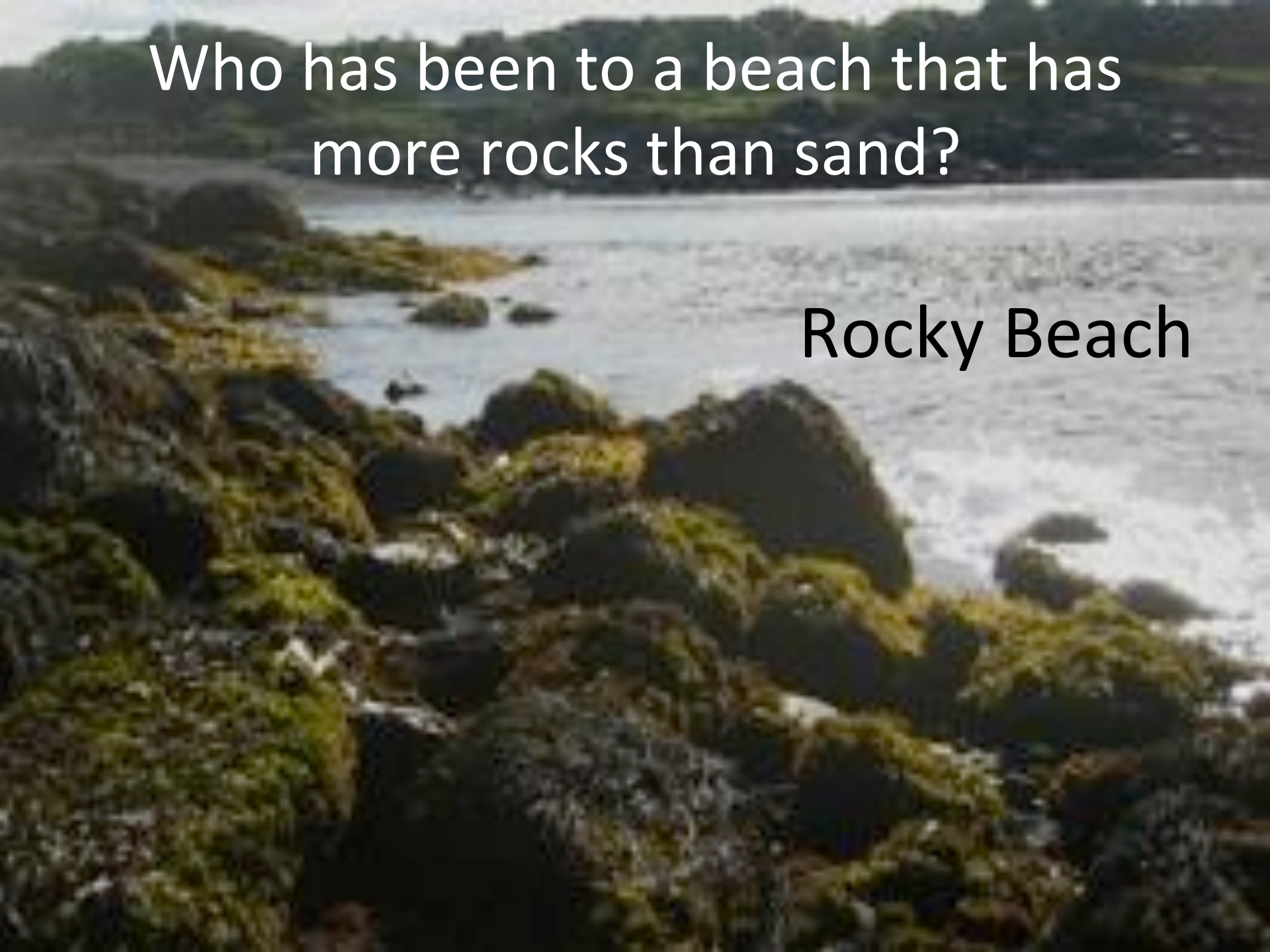
A wide, sandy beach stretches from the foreground into the distance. The sand is light-colored and shows some tracks. To the left, the ocean has gentle waves with white foam. The sky is a clear, bright blue. In the background, there are low, hazy hills or mountains. On the right side, there is a dune covered with sparse, dry-looking vegetation and some green plants.

Who has been to a beach like this?

Sandy Beach

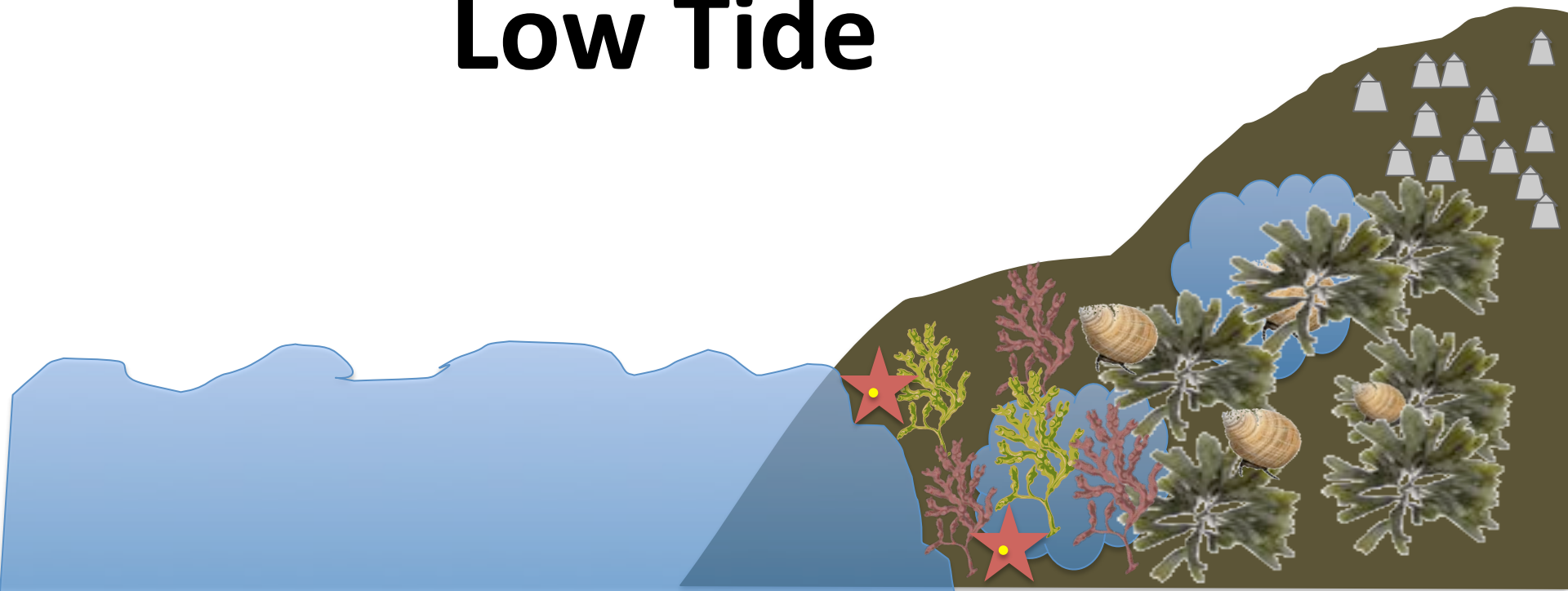
Who has been to a beach that has  
more rocks than sand?

Rocky Beach



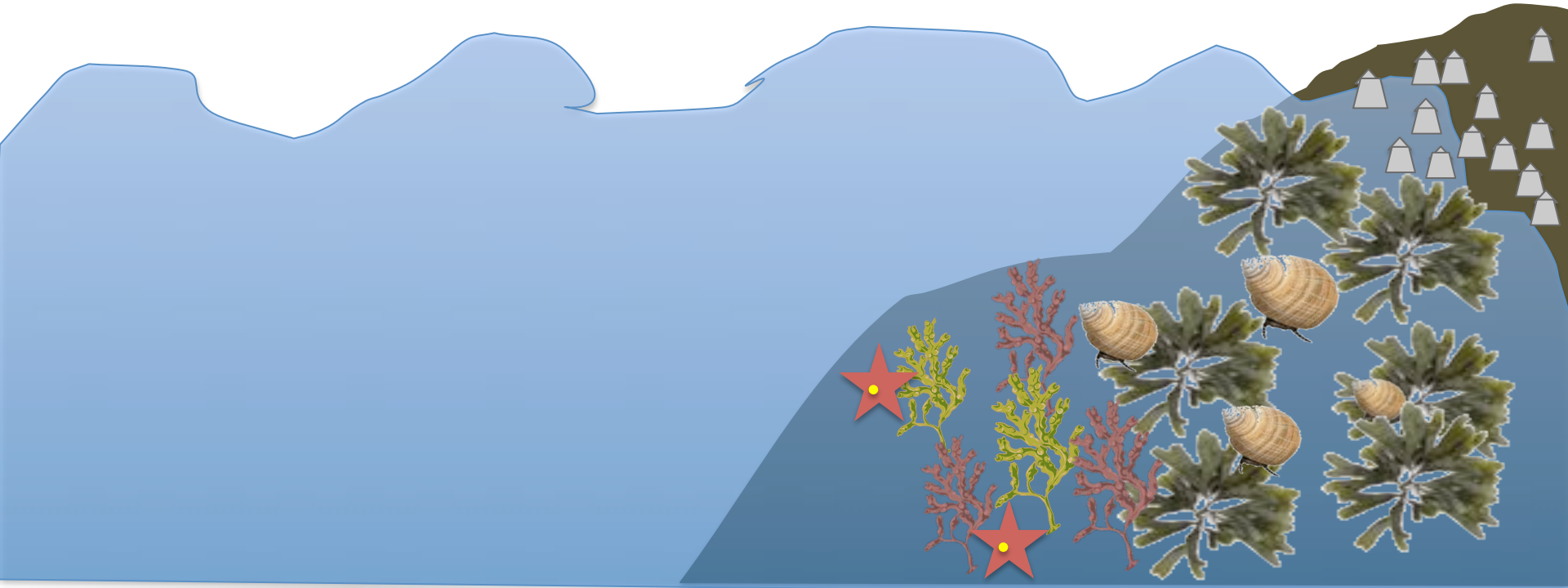
**What is it called when the water is low and so the beach is very big?**

**Low Tide**



**What is it called when the water is high and the beach is very small?**

**High Tide**



A photograph of a rocky coastline. The foreground is dominated by dark, jagged rocks covered in vibrant green seaweed. The middle ground shows a calm body of water with some white foam from waves breaking against the rocks. In the background, a forested hillside meets the water's edge under a clear sky.

**What animals and seaweed live  
on the rocky shore?**

**How many can you think of?**



# Snails



What do you know about snails?



# Crabs



**Spider Crab**



**Rock Crab**



**Green Crab**



**Hermit Crab**



What do you know about crabs?

What else has claws like a crab?





**Lobster**



**Shrimp**



# Sea Stars



What do you know about sea stars?



# Green Sea Urchin





Sea Anemone





# Seaweed



# What do you know about Seaweed?



# What's so interesting about the rocky shore?



# Why do scientists study the rocky shore?

- Easy to get here – walk right onto the beach at low tide!
- Lots of animals and seaweeds live here!



# Who cares?

- The rocky shore
  - Habitat for many living things
  - Storm barrier
  - Place for people to study marine environments
  - Is a great place for tidepooling and fun!



# **Where is the rocky beach?**

**It is high tide, so the rocky beach is covered by water!**

**Come back in a few hours to explore!**



Thanks for exploring the

# Rocky Shore

with us today!

